

WORKS EXHIBITIONS PUBLICATIONS MARKS NEWS ART FAIRS PRIVATE GALLERY SEARCH

Amphora

MARKS

[BACK TO LIST](#)



ARCHIVE EXAMPLE 001



ARCHIVE EXAMPLE 002



ARCHIVE EXAMPLE 003



ARCHIVE EXAMPLE 004



ARCHIVE EXAMPLE 005



ARCHIVE EXAMPLE 006



ARCHIVE EXAMPLE 007



ARCHIVE EXAMPLE 008



ARCHIVE EXAMPLE 009



ARCHIVE EXAMPLE 010



ARCHIVE EXAMPLE 011



ARCHIVE EXAMPLE 012



ARCHIVE EXAMPLE 013



ARCHIVE EXAMPLE 014



ARCHIVE EXAMPLE 015



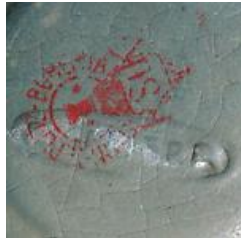
ARCHIVE EXAMPLE 016



ARCHIVE EXAMPLE 017



ARCHIVE EXAMPLE 018



ARCHIVE EXAMPLE 019



ARCHIVE EXAMPLE 020



ARCHIVE EXAMPLE 021



CORAL BLITZ AM100



CORAL FLASH AM101



EASTERN DRAGON VASE AM112



GILDED CHALICE C0004



LEAFY BOUQUET C0005



LOLLIPOP CREEPER AM098



MONSTER OWL VASE
AM113



SEVEN MAIDENS VASE
STE024



SPINAL VINE AM099



SYMBOLIST MASK AM110



TWISTED AM107



TWISTED LILY PADS
C0007



WAX DRIP CANDLESTICK
C0008